



Savannah 800

**One Bedroom, One Bath: 800 s.f. (74.4 m2)
52' x 30' including roof overhangs
Fully Wheelchair Accessible Design**

Features:

- Floor Area: 800 s.f. (74.4 m2)
- Oversized garage: 384 s.f. (35.7 m2)
- Covered entry porch
- Open floor plan** with desk space
- Two accessible kitchen layouts
- Easy to access linear closet in bedroom
- Oversized bathroom** with wheel-in shower
- Seated access to washer & dryer
- Optional **Patio** for outdoor living
- Solar panel-friendly and **passive solar**
- Optional **radiant floor heat**
- Ductless AC or conventional air handler
- 52' x 30' = 15.9m x 9.2m

Thinking Bigger?

We're working on a 2-bedroom version in the "On the Boards" section of our plans page. Check out the Savannah 916 if a home office or guest bedroom is on your wishlist.

Accessible Design:

Whether young or well-seasoned, living with a walker or a wheelchair in a conventional house can be challenging. The motivation behind this design was to create a compact living space that can serve as either a backyard cottage or a standalone house while providing the room and amenities to live comfortably with whatever life has thrown in your direction.

It's also fine to build the house with conventional kitchen and bathroom fixtures knowing that there is a plan for how to adapt those amenities to suit future needs. That way, you defer the extra costs and can retrofit with the latest technologies to suit your particular situation.



Overview:

The first rule when designing for an age-in-place home is to start with a single story and claim enough horizontal space to facilitate a walker or a wheelchair as needs dictate. This floor plan provides just enough room for a single or a couple to live comfortably while still maintaining efficient use of space and adequate storage inside, with plenty of overflow room in the garage. Consider removing the garage to reduce the house width from 52 feet to 36 Feet. With no garage, we suggest adding a covered side entrance over what is now the door from the dining area into the garage, resulting in a 42-foot wide house.)

▲ Rear rendering showing alternate plan with patio

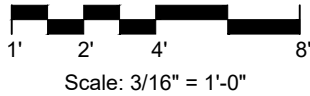


Savannah 800

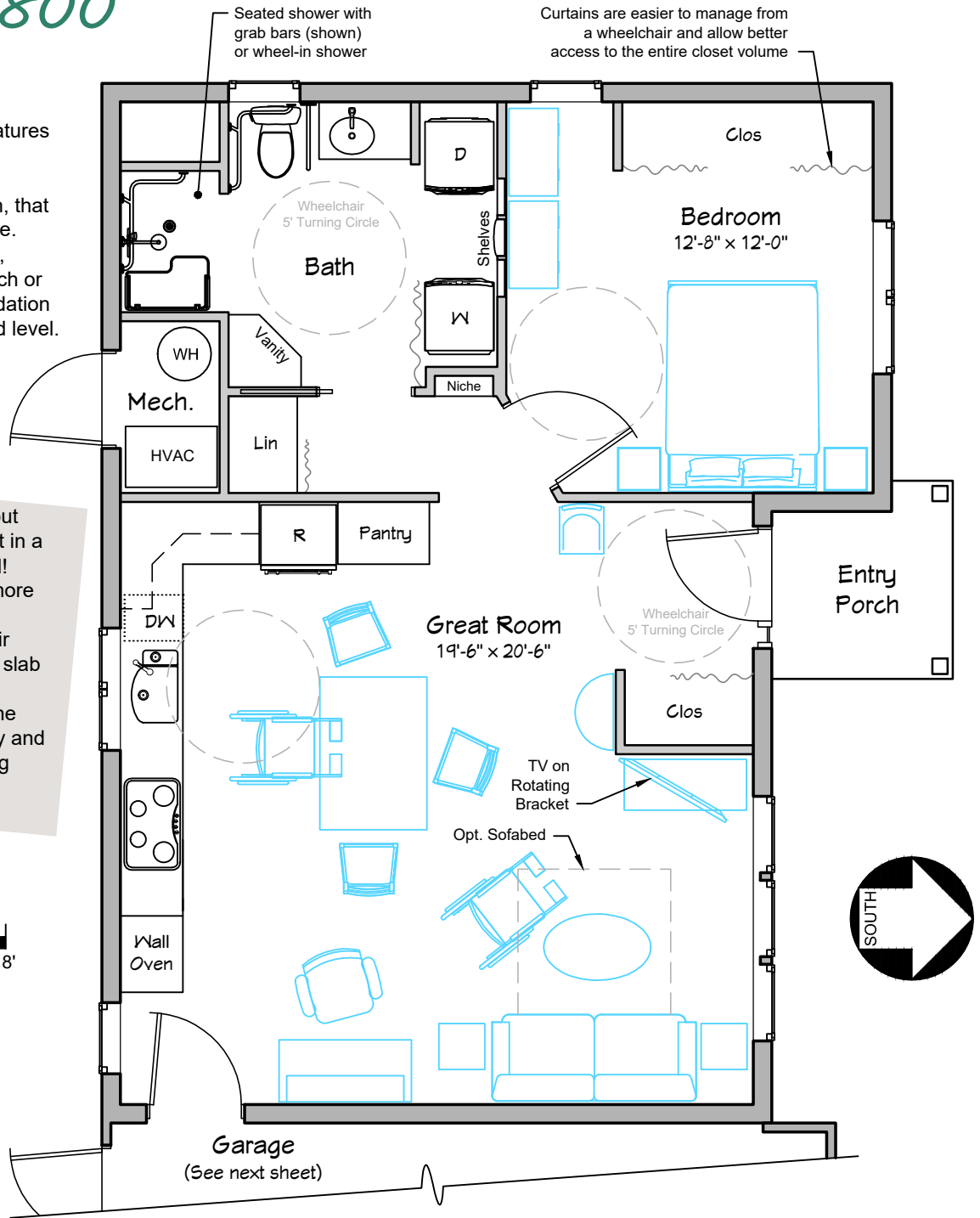
About the plan:

Other standard accessible design features include 36" doors (compared to the standard 30"), and making sure that anywhere a wheelchair needs to spin, that there is a full 5' diameter turning circle. Entering the house is straightforward, whether it's via the covered front porch or the garage. The slab-on-grade foundation makes for a low ramp up from ground level.

Not everyone is a fan of slabs, but once I tried out radiant floor heat in a thermal mass slab I was hooked! The heat is silent, steady, and more comfortable than forced hot air because there is no lukewarm air chilling exposed skin. The thick slab stores heat from the sun and releases it in the evening after the sun has set, which saves energy and keeps the room from overheating during daylight hours.



FLOOR PLAN
SCALE: 3/16" = 1'-0"



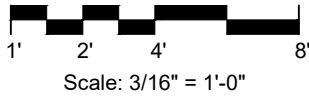
The great room is essentially a giant flexible space for everything that needs to happen during the course of the day. The giant front coat closet defines a slightly more intimate space for seating and a TV. With this "L" shaped kitchen, there is no shortage of space, and the adjacent table is super-convenient for food prep, transferring dinner from stove to table, and cleaning up the dishes. The tradeoff is that it is a rather rambling layout requiring a fair amount of movement to prepare a meal. Compare this to the alternate layout on Page 3.

Supremely functional, the bedroom does not need an explanation, but the bathroom has a LOT going on! Starting with a 12' x 9' box and placing the door in the middle of the room, it allows for all the fixtures and components to be pushed to the perimeter, leaving with an oversized turning circle in the middle. One rather unique feature is the washer/dryer arrangement where you wheel in between the appliances and can easily transfer clothes from one machine to the other while still having the detergent and other products accessible on the shelf in front of you. While the sink may only have a modest horizontal counter, this is made up for with a dedicated vanity for personal products and/or makeup. With a large linen closet right outside, this bathroom won't cramp anyone's style!

Note: that it may be difficult to adapt this house if two residents are dependent on wheelchairs. Feel free to reach out for a more spacious custom design if you find yourself in this situation or consider the two-bedroom Savannah 916.



Savannah 800

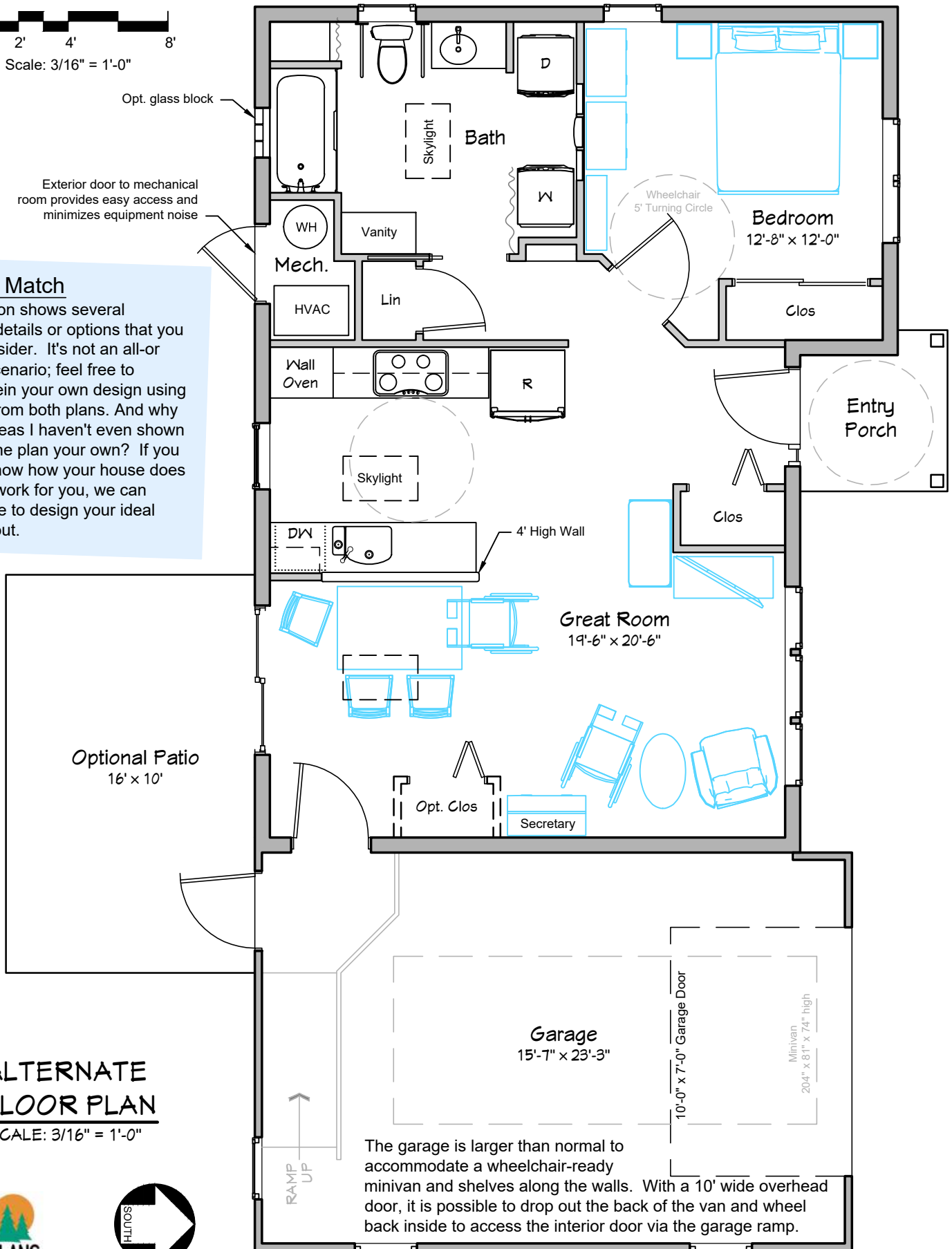


Opt. glass block

Exterior door to mechanical room provides easy access and minimizes equipment noise

Mix and Match

This version shows several alternate details or options that you might consider. It's not an all-or nothing scenario; feel free to frankenstein your own design using features from both plans. And why not add ideas I haven't even shown to make the plan your own? If you already know how your house does or doesn't work for you, we can collaborate to design your ideal home layout.



ALTERNATE FLOOR PLAN

SCALE: 3/16" = 1'-0"

The garage is larger than normal to accommodate a wheelchair-ready minivan and shelves along the walls. With a 10' wide overhead door, it is possible to drop out the back of the van and wheel back inside to access the interior door via the garage ramp.

