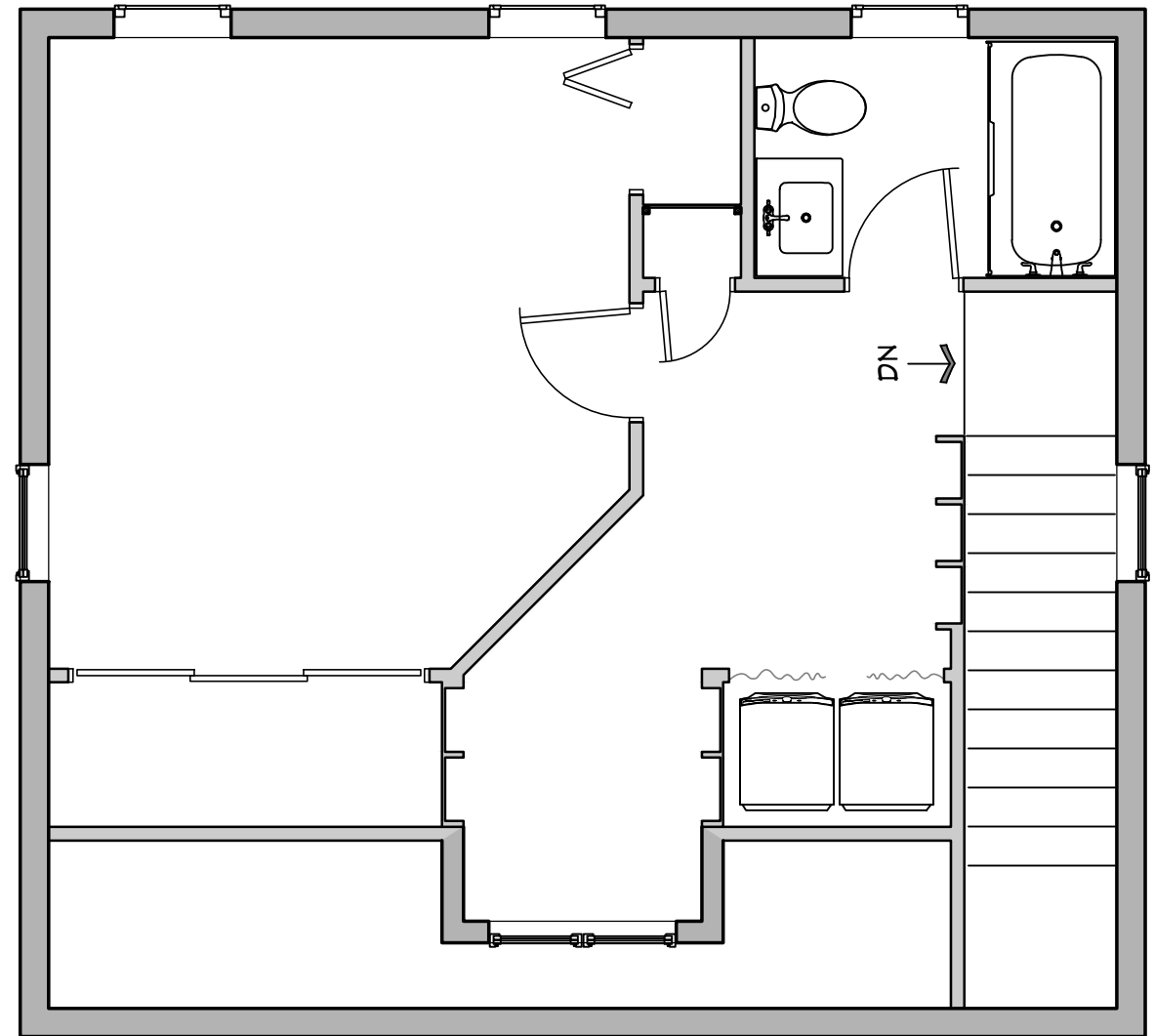
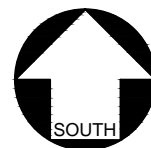


Optional First Floor Window Layout

First Floor Plan



Second Floor Plan



BLANK FLOOR PLANS
STUDY PLAN PACKAGE
FOR THE
Takoma 965

For 3d Walkthroughs, see our Compact Home Plans channel on YouTube



Compact Home Plans
309 Windsor Ave
Centreville, MD 21617
301-529-2368
compacthomeplans.com
steve@compacthomeplans.com

DATE:
FEB 2020

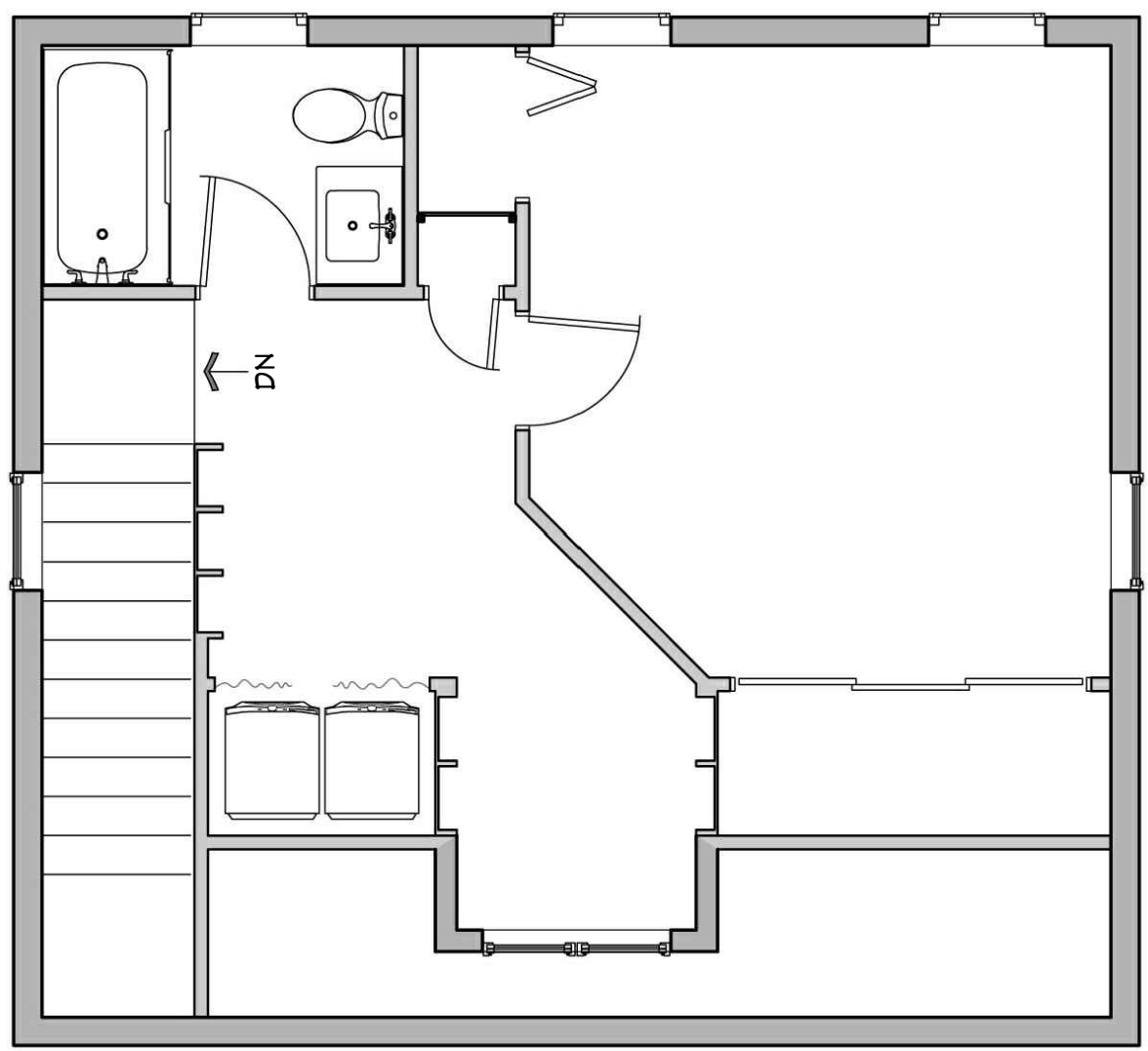
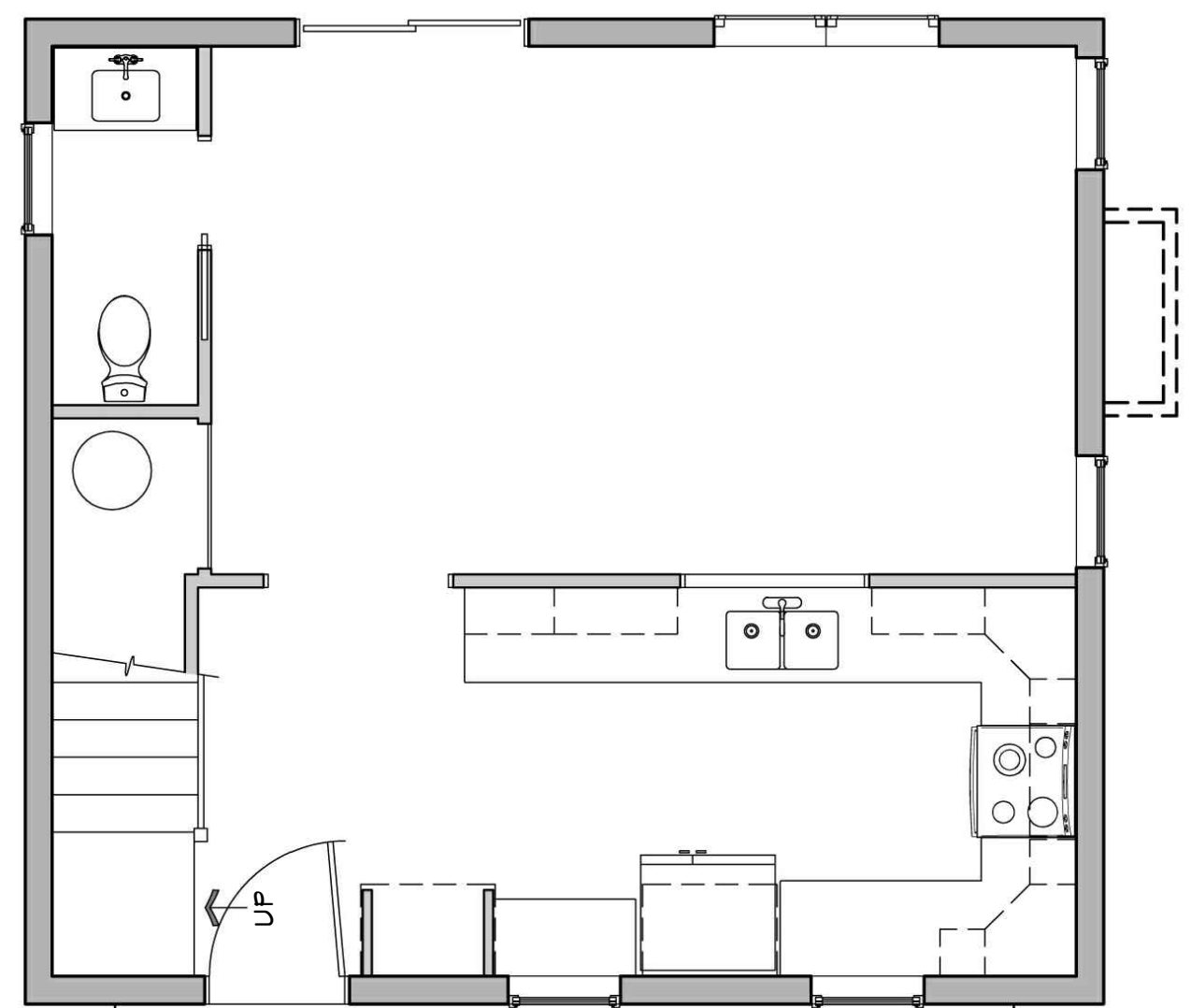
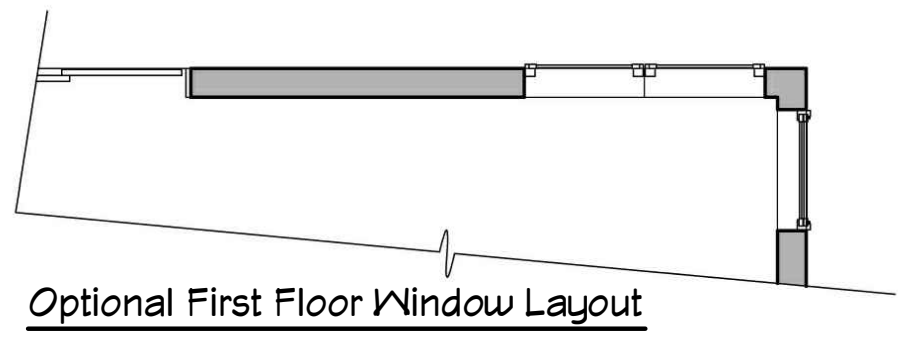
SCALE:
1/4" = 1'-0"

PLOTTED:
Jul 18, 2023

SHEET:
A1.6

Copyright © 2023





MIRRORED FLOOR PLANS
 STUDY PLAN PACKAGE
 FOR THE
Takoma 965
 For 3d Walkthroughs, see our Compact Home Plans channel on YouTube

Compact Home Plans
 309 Windsor Ave
 Centreville, MD 21617
 301-529-2368
 compacthomeplans.com
 steve@compacthomeplans.com

tiny inspired

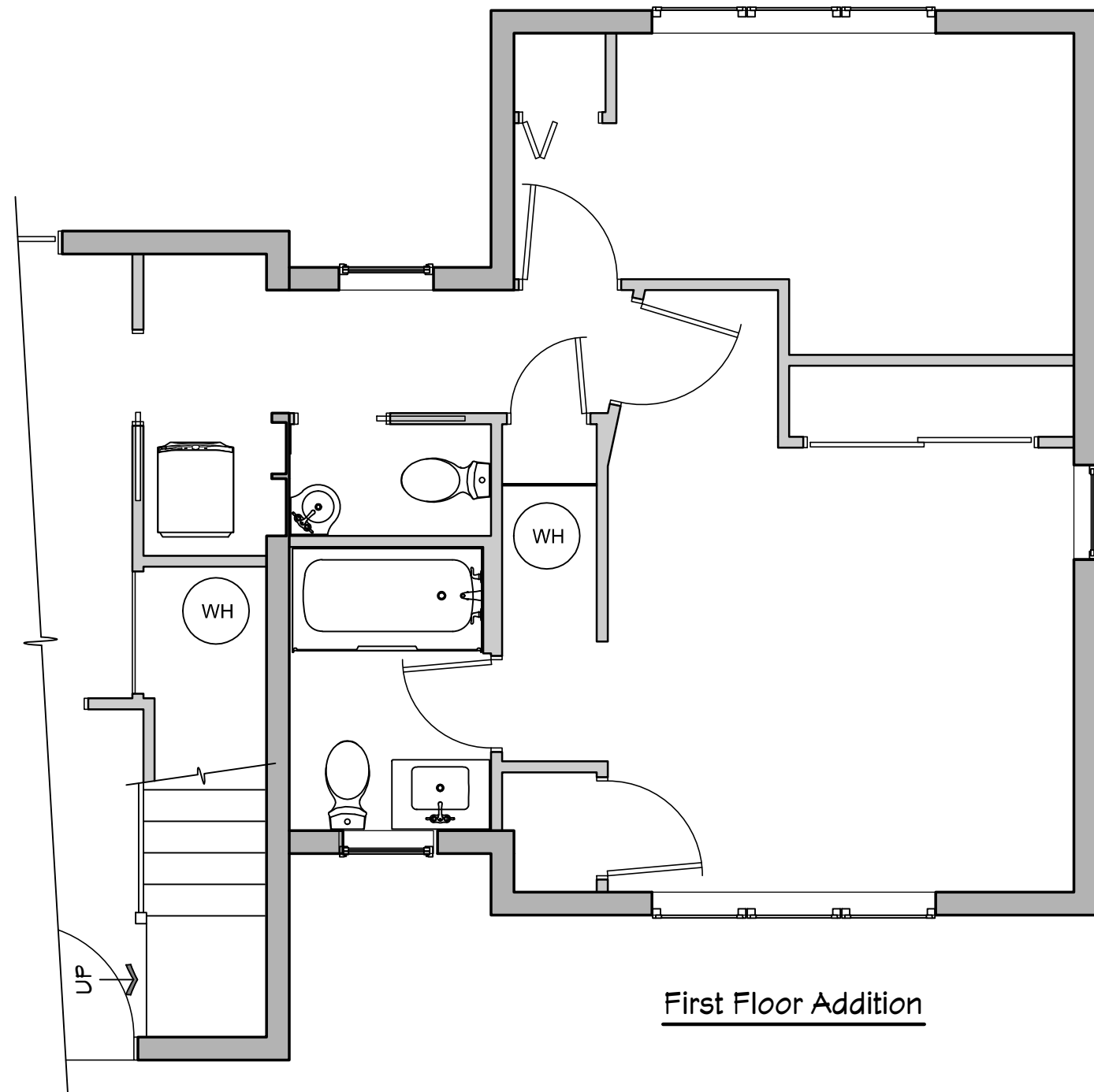
Copyright © 2023

DATE:
 FEB 2020

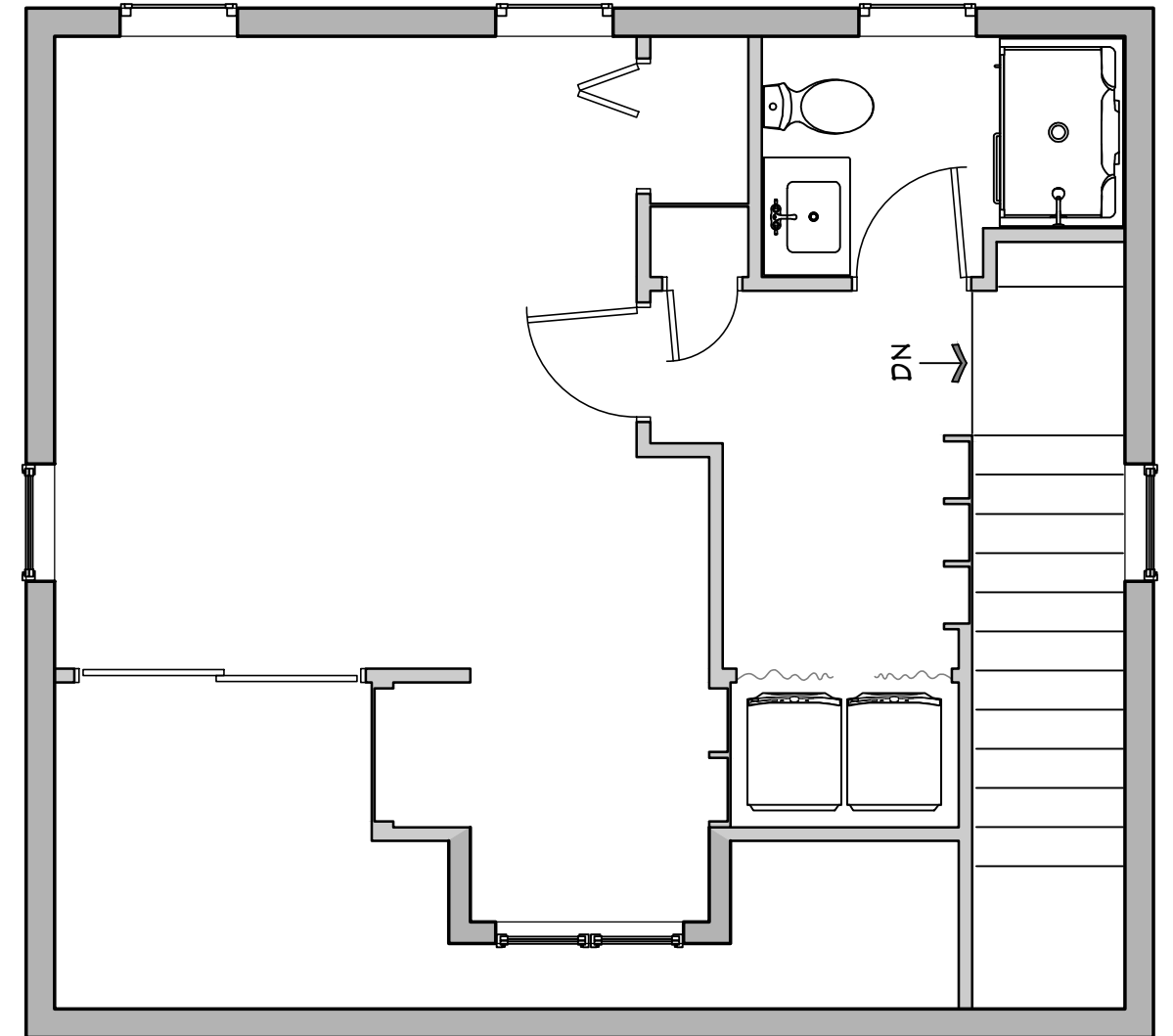
SCALE:
 1/4" = 1'-0"

PLOTTED:
 Jul 18, 2023

SHEET:
A1.6



First Floor Addition



Second Floor Plan Options

BLANK FLOOR PLAN OPTIONS
STUDY PLAN PACKAGE

FOR THE

Takoma 965

For 3d Walkthroughs, see our Compact Home Plans channel on YouTube



Compact Home Plans
309 Windsor Ave
Centreville, MD 21617
301-529-2368
compacthomeplans.com
steve@compacthomeplans.com

DATE:
FEB 2020

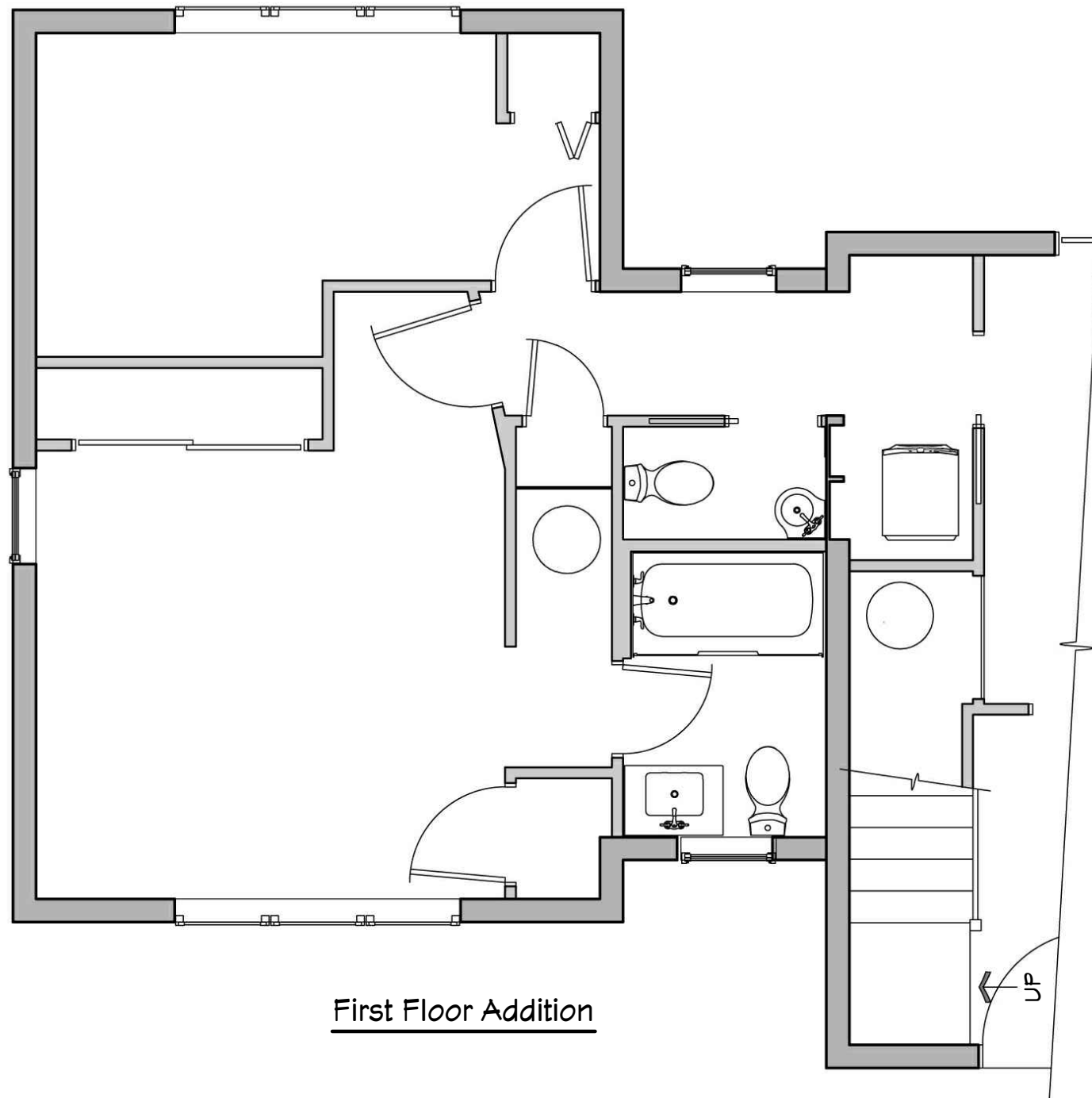
SCALE:
1/4" = 1'-0"

PLOTTED:
Jul 18, 2023

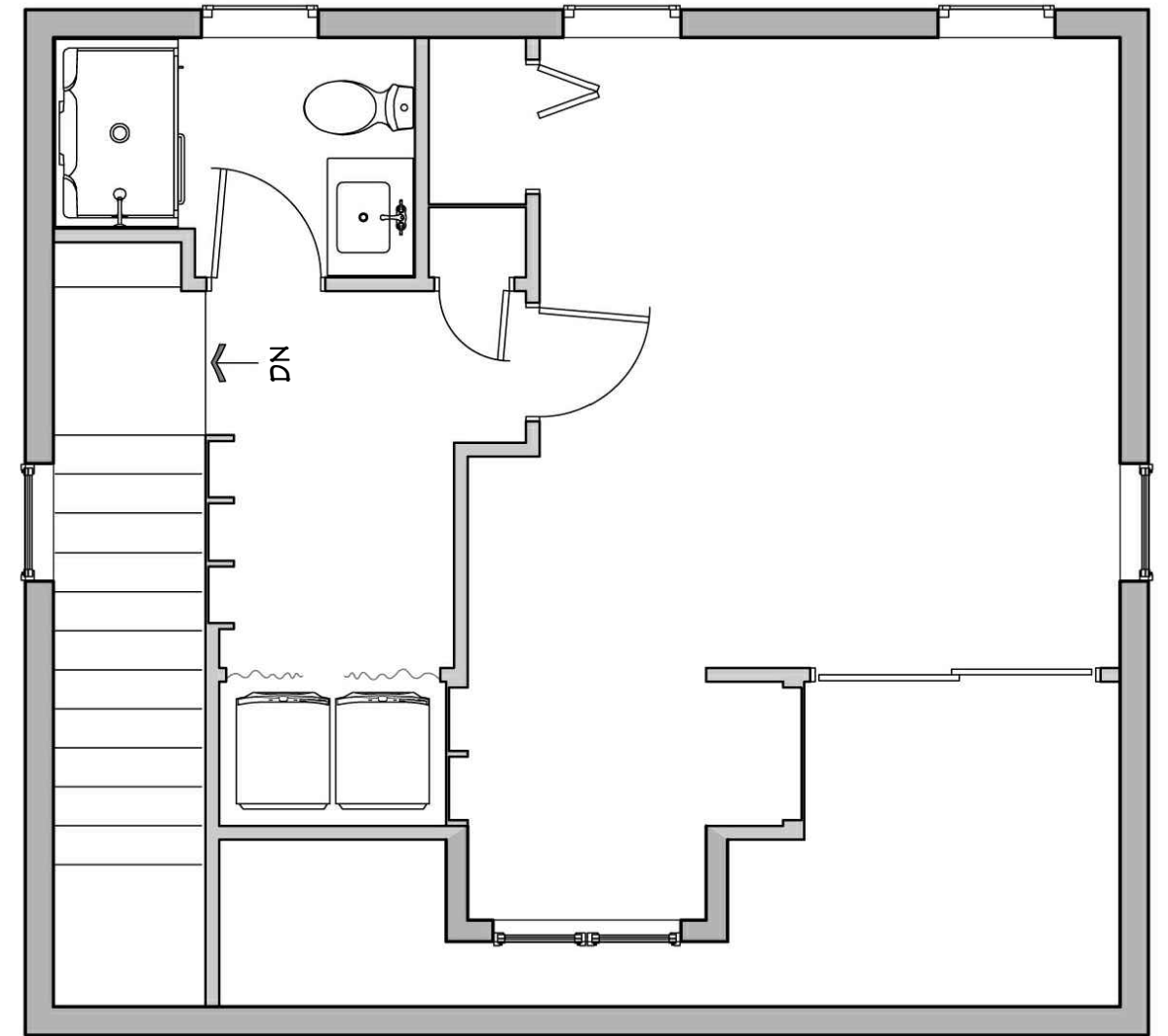
SHEET:
A1.7

Copyright © 2023





First Floor Addition



Second Floor Plan Options

MIRRORED FLOOR PLAN OPTIONS
STUDY PLAN PACKAGE

FOR THE

Takoma 965

For 3d Walkthroughs, see our Compact Home Plans channel on YouTube



Compact Home Plans
309 Windsor Ave
Centreville, MD 21617
301-529-2368
compacthomeplans.com
steve@compacthomeplans.com

DATE:
FEB 2020

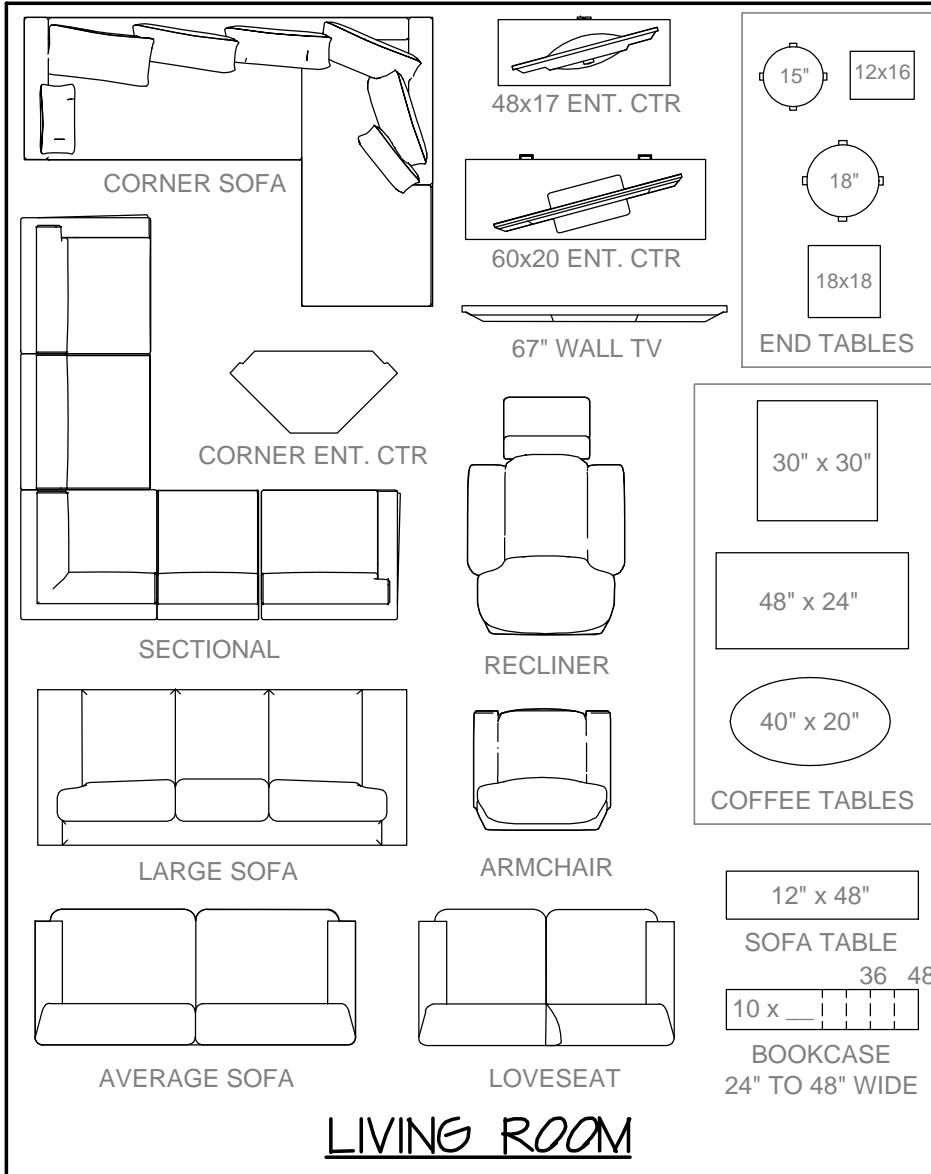
SCALE:
1/4" = 1'-0"

PLOTTED:
Jul 18, 2023

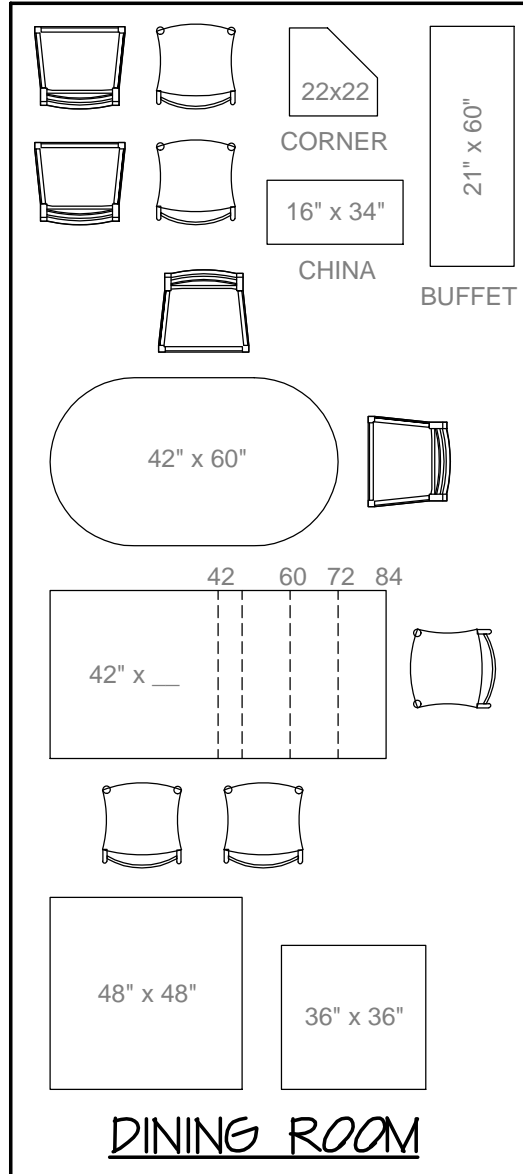
SHEET:
A1.7

Copyright © 2023

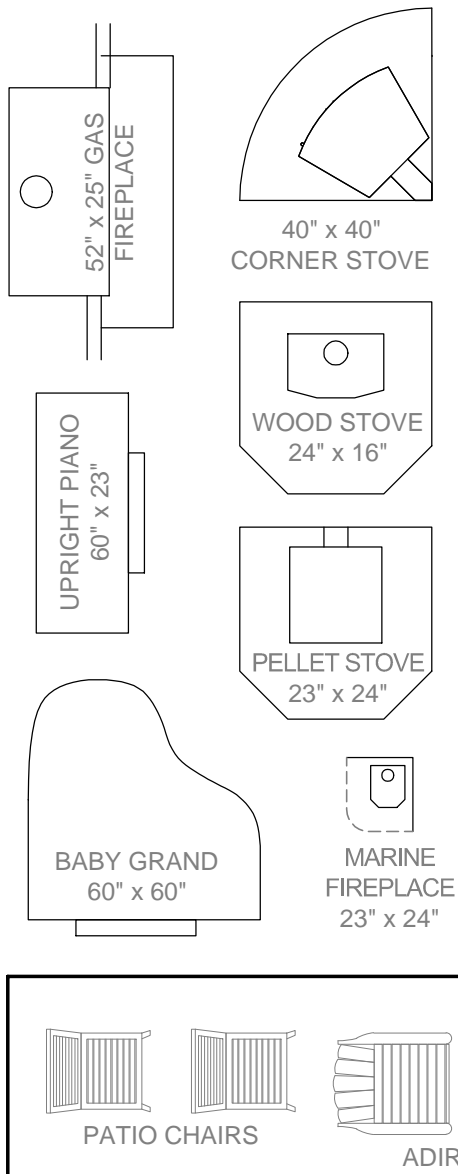




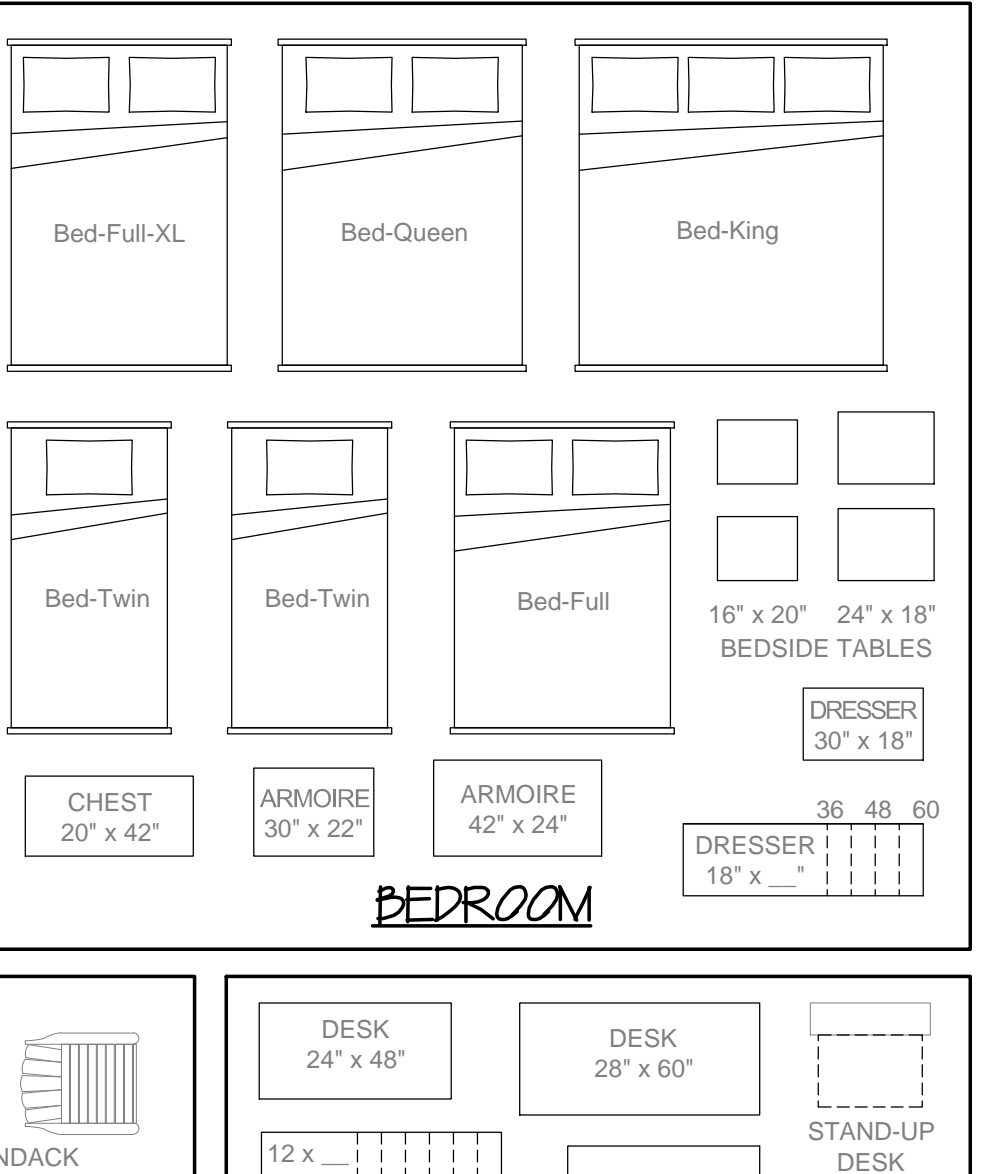
LIVING ROOM



DINING ROOM



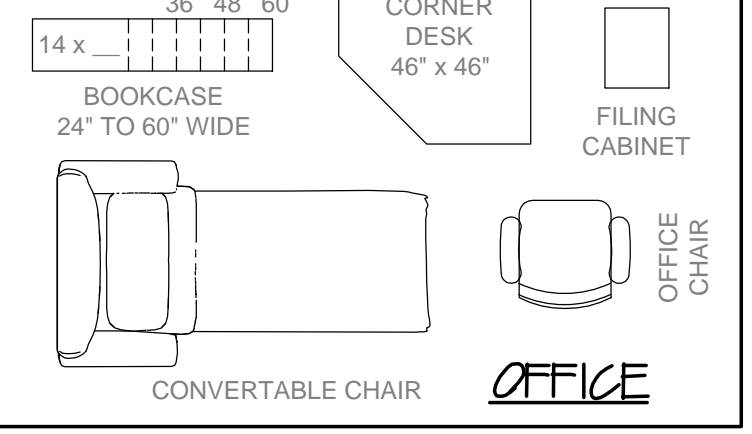
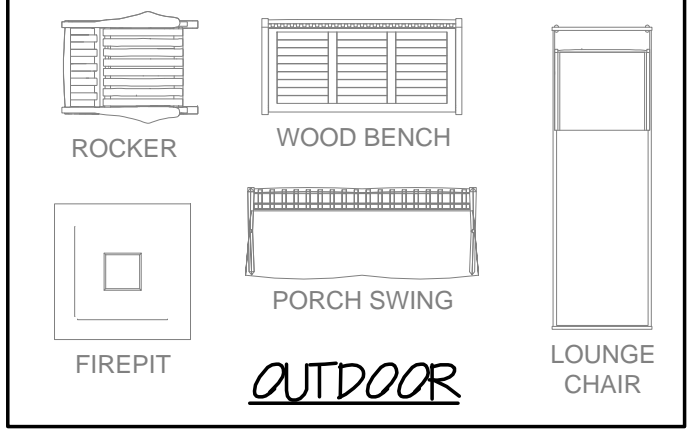
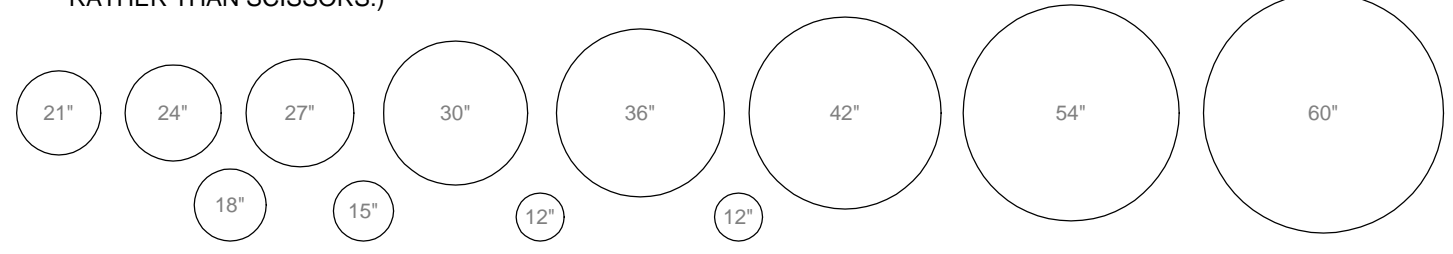
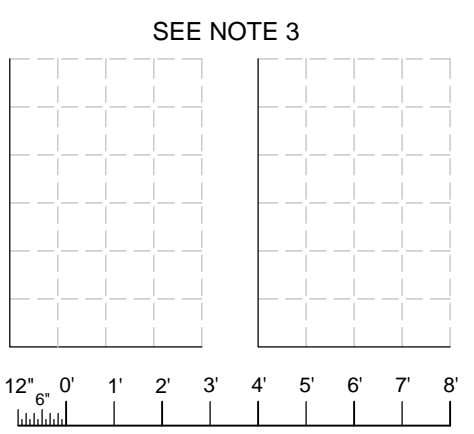
OUTDOOR



BEDROOM

HINTS:

1. SCISSORS ARE BEST FOR CUTTING OUT ROUND OBJECTS. FOR RECTANGULAR OBJECTS, TRY A BLADE (X-ACTO KNIFE, BOX CUTTER, RAZOR BLADE, ETC.) AND A STRAIGHTEDGE. YOU CAN CUT ON A KITCHEN CUTTING BOARD, THE BACK OF A PAD OF PAPER, OR EVEN A COUPLE LAYERS OF CEREAL BOX.
2. WITH A BUNCH OF LITTLE RECTANGLES SHUFFLED AROUND ON A BLANK PLAN, YOU CAN EASILY LOSE TRACK OF WHAT'S WHAT. MAKE SURE EVERYTHING IS LABELED.
3. DON'T HESITATE TO MEASURE YOUR OWN PRIZED FURNITURE AND RECREATE IT IN MINIATURE USING THE SCALE TO THE RIGHT. JUST CUT OUT THE SCALE AND THE GENERIC RECTANGLE AND MEASURE THE SIZE RECTANGLE YOU'RE CREATING.
4. ADD A BLANK SHEET UNDER THIS PRINTOUT BEFORE CUTTING IF YOU NEED MULTIPLES OF ANYTHING. (ONLY WORKS WITH A BLADE RATHER THAN SCISSORS.)



OFFICE

FURNITURE SYMBOLS
STUDY PLAN PACKAGE
FOR THE
Takoma 965
For 3d Walkthroughs, see our Compact Home Plans channel on YouTube

Compact Home Plans
309 Windsor Ave
Centreville, MD 21617
301-529-2368
compacthomeplans.com
steve@compacthomeplans.com

DATE: FEB 2020
SCALE: 1/4" = 1'-0"
PLOTTED: Jul 18, 2023
SHEET: A1.8

Copyright © 2023